

- LSF07 is a high speed model for precise grinding and polishing. LSF 07 is equipped with a 3 mm collet and can be equipped with a 1/8" collet as optional. (Without speed governor)
- LSF18 series – All the models in the 18 series are equipped with a powerful 0.5 kW air motor and speed governor. The angled models (LSV) have a patented solution that overcomes temperature and leakage problems commonly associated with angle head tools. The result is a leak-free and self-cooled angle head. All models are lubrication free except for the high speed model LSF18 S460.
- LSF28 series – Powerful 0.85 kW air motor, with speed governor and scatter damping. Impressive power-to-weight ratio.
- LSF38 – One of the most powerful one hand die grinder on the market, up to 1.35 kW. If you are looking for a tool that can boost your productivity and save you money, the LSF38 is the right tool! The die grinders in the 38 series are lubrication free with scatter damping for maximum operator comfort and safety.



Model	Rec. max dia of			Max output kW	Max output hp	Weight kg	Length mm	Air consumption at				Rec. hose size mm	Air inlet thread BSP	Ordering No. with collet		
	Max speed r/min	Tungsten free burrs mm	Mount- ed point mm					max output l/s	free speed cfm	free speed l/s	free speed cfm			6 mm	1/4"	
Straight models																
LSF18 S460E-1R	46000	9	16	0.51	0.68	0.7	1.5	291	11.4	24	15.0	31.5	10	3/8	1/4	8423 1224 12
LSF18 S460-1 ^a	46000	9	16	0.51	0.68	0.5	1.1	193	11.4	24	15.0	31.5	10	3/8	1/4	8423 1224 04
LSF18 S460E-1 ^a	46000	9	16	0.51	0.68	0.7	1.5	291	11.4	24	15.0	31.5	10	3/8	1/4	8423 1224 09
LSF18 S300	30000	12	20	0.50	0.67	0.5	1.1	193	11.3	23.7	6.6	13.8	10	3/8	1/4	8423 1224 03
LSF18 S300/R	30000	12	20	0.50	0.67	0.5	1.1	193	11.3	23.7	6.6	13.8	10	3/8	1/4	8423 1224 11
LSF18 S300E-1	30000	12	20	0.50	0.67	0.7	1.5	291	11.3	23.7	6.6	13.8	10	3/8	1/4	8423 1224 08
LSF18 S300E-1/R	30000	12	20	0.50	0.67	0.7	1.5	291	11.3	23.7	6.6	13.8	10	3/8	1/4	8423 1224 10
LSF18 S200	20000	12	20	0.50	0.54	0.5	1.1	193	9.6	20.1	3.5	7.4	10	3/8	1/4	8423 1224 02
LSF18 S200E-1	20000	12	20	0.50	0.54	0.7	1.5	291	9.6	20.1	3.5	7.4	10	3/8	1/4	8423 1224 07
LSF28 S250 ^a	25000	12	32	0.86	1.15	0.75	1.65	210	18.5	39.2	11.0	23.3	10	3/8	3/8	8423 1235 11
LSF28 S250E ^a	25000	12	32	0.86	1.15	1.25	2.75	335	18.5	39.2	11.0	23.3	10	3/8	3/8	8423 1235 60
LSF28 S250E-R ^a	25000	12	32	0.86	1.15	1.25	2.75	335	18.5	39.2	11.0	23.3	10	3/8	3/8	8423 1235 49
LSF28 S250-R ^a	25000	12	32	0.86	1.15	0.75	1.65	210	18.5	39.2	11.0	23.3	10	3/8	3/8	8423 1235 48
LSF28 S180 ^a	18000	16	40	0.82	1.10	0.75	1.65	210	17.4	36.9	11.0	23.3	10	3/8	3/8	8423 1235 04
LSF28 S180E ^a	18000	16	40	0.82	1.10	1.25	2.75	335	17.4	36.9	7.0	14.8	10	3/8	3/8	8423 1235 05
LSF28 S180E-1R ^a	18000	16	40	0.82	1.10	1.25	2.75	335	17.4	36.9	7.0	14.8	10	3/8	3/8	8423 1235 42
LSF28 S180-1R ^a	18000	16	40	0.82	1.10	0.75	1.65	210	17.4	36.9	7.0	14.8	10	3/8	3/8	8423 1235 41
LSF28 S150 ^a	15000	16	40	0.70	0.94	0.75	1.65	210	15.0	31.8	5.5	11.7	10	3/8	3/8	8423 1235 64
LSF28 S150E ^a	15000	16	40	0.70	0.94	1.25	2.75	335	15.0	31.8	4.3	9.1	10	3/8	3/8	8423 1235 61
LSF28 S120 ^a	12000	16	40	0.66	0.89	0.75	1.65	210	13.8	29.3	4.0	8.5	10	3/8	3/8	8423 1235 67
LSF38 S250E-01 ^a	25000	16	40	1.35	1.8	1.5	3.3	352	28	58	25	53	13	1/2	3/8	8423 1231 17
LSF38 S180E-01	18000	16	40	1.35	1.8	1.5	3.3	352	28	58	15	31	13	1/2	3/8	8423 1231 16
LSF38 S180E-01/R	18000	16	40	1.35	1.8	1.5	3.3	356	28	58	15	31	13	1/2	3/8	8423 1231 15
LSF38 S150E-01/R	15000	16	40	1.25	1.7	1.5	3.3	356	24	50	13	27	13	1/2	3/8	8423 1231 14
Angle grinders																
LSV18 S200-1	20000	12	20	0.46	0.61	0.6	1.3	185	11	23	7	14.7	10	3/8	1/4	8423 0111 11
LSV18 S120-1	12000	12	20	0.46	0.61	0.6	1.3	185	11	23	7	14.7	10	3/8	1/4	8423 0111 13
LSV18 S080-1	8000	12	20	0.37	0.5	0.6	1.3	185	11	23	6.5	13.6	10	3/8	1/4	8423 0111 16
LSV28 S150	15000	16	40	0.68	0.91	1.15	2.53	250	17.0	36.0	8.3	17.6	10	3/8	3/8	8423 0125 54
Grinders for polishing																
LSF28 ST030	3000	–	–	0.67	0.90	1.16	2.55	275	18.0	38.2	8.6	18.2	10	3/8	3/8	8423 1235 63
LSF28 ST030E	3000	–	–	0.67	0.90	1.76	3.87	400	18.0	38.2	8.6	18.2	10	3/8	3/8	8423 1235 62
LSF28 ST070 ^a	7000	–	–	0.76	1.02	1.16	2.55	275	18.9	40.1	12.4	26.3	10	3/8	3/8	8423 1235 66
LSF28 ST070E ^a	7000	–	–	0.76	1.02	1.76	3.87	400	18.9	40.1	12.4	26.3	10	3/8	3/8	8423 1235 65
High speed pen model																
LSF07 S850	88000	4	6	0.10	0.13	0.4	0.9	170	2.2	4.9	2.3	4.6	4.5	3/16	–	8423 1222 03

^a Not lubrication-free.

-1 = 6 mm collet

E = Extended version

R = Model is rigid, without scatter damping

Accessories Included

LSF07

Air hose
ErgoNIP 08
Collet 3 mm (1. se ill.)

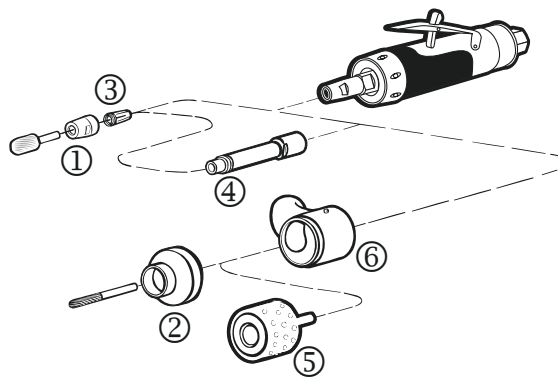
LSF/LSV/18/28

Spanner
Collet 6 mm (1. se ill.)
Air hose, air hose nipple and clamp
Exhaust hose

LSF38

Air hose nipple
Collet 6 mm (1. se ill.)

Optional Accessories



	LSF07	LSF/LSV18	LSF/LSV28	LSF38	See illustration
Optional collets					
Collet 1/8"	4150 1822 00	-	-	-	3
Collet 3 mm	-	4150 0081 00	4150 0081 00	-	3
Collet 6 mm	-	4150 0075 00	4150 0075 00	-	3
Collet 8 mm	-	4150 0074 00	4150 0074 00	-	3
Collet 1/4"	-	4150 0076 00	4150 0076 00	4150 1754 00	3
Collet 10 mm	-	-	-	4150 0681 00	3
Collet nut	-	4150 0760 00	4150 0760 00	4150 0849 00	3
Extension 75 mm /3 in	-	4150 0674 00 ^a	4150 0674 00 ^a	-	4
For machining of plastic and glas fibre					
Diamond burr Ø 6 mm	-	3780 5013 70	-	-	2
Diamond burr Ø 8 mm	-	-	3780 5014 20	-	2
Diamond drum Ø 27 mm	-	3780 5033 00	-	-	5
Diamond drum Ø 50 mm	-	-	3780 5035 00	-	5
Spot suction kit for burr (burr not included)	-	3780 3015 22	3780 4007 41	-	6
Spot suction kit for drum (drum not included)	-	3780 4011 61 ^b	3780 4011 71 ^c	-	6

^a Only for rigid (-R) models

^b For use with 6 mm collet

^c For use with 8 mm collet



Service Kits

07 series	4081 0243 90
18 series	4081 0355 90
28 series	4081 0315 90
38 series	4081 0308 90

Straight Grinders

For Cone Wheels and Collet

Atlas Copco straight grinders for cone wheel or collet, are suitable for grinding in holes and cavities in castings, etc. They require rough abrasives, which must be attached to the tool with a rigid shank or be mounted directly to the spindle.

The power ranges from 0.7 kW (0.88 hp) to 2 kW (2.7 hp). All Atlas Copco tools are designed with focus on operator ergonomics and maximum power, the best combination for maximum productivity.

- The LSR28 and 38 are suitable for lighter applications where accessibility is first priority.
- LSR43 has a proven and rigid design, and is suitable for those really tough applications where durability is needed.
- If you need maximum power, then LSR48 is the natural choice, where you will have access to 2 kW in combination with auto balancer for even less vibrations. All packed in a strong and light package.



Model	Max free speed r/min	Max output		Weight		Length mm	Air consumption at				Rec. hose size		Air inlet thread BSP	Ordering No.
		kW	hp	kg	lb		max output l/s	free speed cfm	l/s	cfm	mm	in		
LSR28 S120-CW ^a	12000	0.66	0.88	1.2	2.6	305	15.8	33.5	4.3	8.6	13	3/8	3/8	8423 1325 05
LSR28 S150-CW ^a	15000	0.70	0.94	1.2	2.6	308	18.0	38.2	5.8	12.3	13	3/8	3/8	8423 1325 06
LSR38 S150-CW	15000	1.25	1.7	1.5	3.3	320	24	50	13	27	13	3/8	3/8	8423 1232 31
LSR38 S180-CW	18000	1.35	1.8	1.5	3.3	320	28	58	15	31	13	3/8	3/8	8423 1232 30
LSR43 S150-CW ^a	15000	1.0	1.3	2.0	4.4	438	23	49	10	21	13	1/2	1/2	8423 1432 32
LSR43 S150-CW ^a	15000	1.0	1.3	2.1	4.6	503	23	49	10	21	13	1/2	1/2	8423 1432 33
LSR43 S120-CW ^a	12000	0.9	1.2	2.0	4.4	438	20	42	7	15	13	1/2	1/2	8423 1432 24
LSR43 S090-CW ^a	9000	0.8	1.1	2.0	4.4	438	18	38	5	11	13	1/2	1/2	8423 1432 57
LSR43 S072-CW ^a	7200	0.8	1.1	2.0	4.4	438	17	36	4	8	13	1/2	1/2	8423 1432 40
LSR48 S150-CW	15000	2.0	2.7	2.3	5.0	447	35	74	19	40	16	5/8	1/2	8423 1430 08
LSR48 S120-CW	12000	1.8	2.4	2.3	5.0	447	30	64	13	27	16	5/8	1/2	8423 1430 05
LSR48 S090-CW	9000	1.5	2.0	2.3	5.0	447	28	59	11	23	16	5/8	1/2	8423 1430 03

^a Not lubrication free.
- CW = Cone wheel model

LSR28/38 CW indicates use for cone wheel or collet, thread M12x1 to be combined with adapter for wheel thread. LSR48 has UNC 1/2 spindle for direct attachment of CW. For 5/8 and collet use adapter, see page for accessories.

Accessories Included

LSR28/38 CW version

Air hose nipple and clamp
Exhaust hose
Wrenches
Whip hose (only LSR 28)

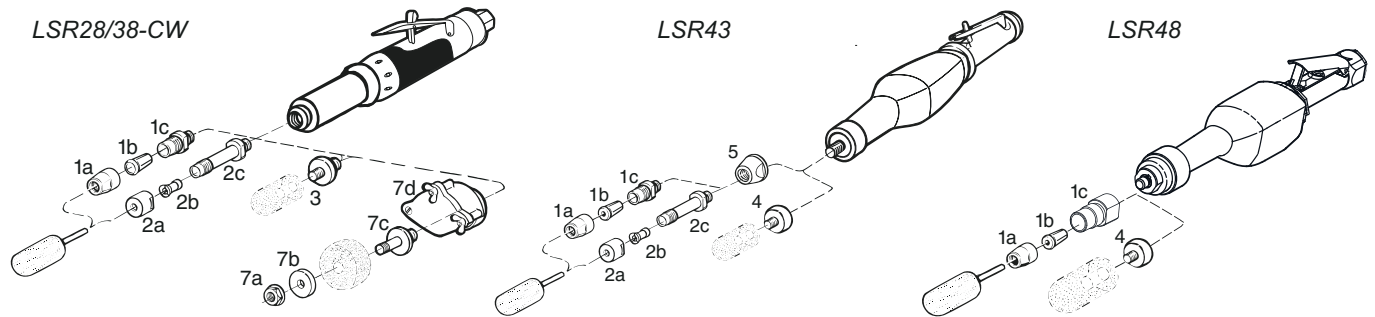
LSR43 CW

Hose nipple
Wrench

LSR48 CW

Whip hose
Wrench

Optional Accessories



LSR28/38

	See illustration	Ordering No.
Adapter for cone wheel with thread		
UNC/W 3/8"	3	4150 0318 00
UNF 3/8"	3	4150 0318 01
UNC 1/2"	3	4150 1357 00
UNC/W 5/8"	3	4150 0767 00
Collet type 1b		
Nut	1a	4150 8049 00
Collet Ø 6 mm	1b	4150 1453 00
Collet Ø 8 mm	1b	4150 0706 00
Collet Ø 9 mm	1b	4150 0765 00
Collet Ø 10 mm	1b	4150 0681 00
Collet Ø 1/4"	1b	4150 1754 00
Collet holder	1c	4150 0680 00
Collet type 2b		
Nut	2a	4150 0221 00
Collet Ø 6 mm	2b	4150 0222 00
Collet Ø 8 mm	2b	4150 0325 00
Collet Ø 1/4"	2b	4150 0223 00
Collet holder 90 mm	2c	4150 0441 00
Collet holder 45 mm	2c	4150 0211 00
Parts for (50x19x10) wheels		
Nut	7a	0266 2111 00
Flange	7b	4106 5938 00
Holder	7c	4150 0212 00
Wheel guard	7d	4150 1299 81
Parts for (50x13x10) wheels		
Nut	7a	0266 2111 00
Flange	7b	4106 5938 00
Holder	7c	4150 1145 00
Wheel guard	7d	4150 1299 81

^a Adapters are not included with the tool, and need to be ordered to attach a cone wheel.

LSR43

	See illustration	Ordering No.
Adapter for cone wheel with thread		
UNC/W 3/8"	4	4150 0943 00
UNF 3/8"	4	4150 0943 01
UNC 1/2"	4	4150 0944 00
UNC/W 5/8"	4	4150 0945 00
Collet type 1b		
Nut	1a	4150 0680 00
Collet Ø 6 mm	1b	4150 1453 00
Collet Ø 8 mm	1b	4150 0706 00
Collet Ø 9 mm	1b	4150 0765 00
Collet Ø 10 mm	1b	4150 0681 00
Collet Ø 1/4"	1b	4150 1754 00
Collet holder	1c	4150 0849 00
Collet type 2b		
Nut	2a	4150 0221 00
Collet Ø 6 mm	2b	4150 0222 00
Collet Ø 8 mm	2b	4150 0325 00
Collet Ø 1/4"	2b	4150 0223 00
Collet holder 90 mm	2c	4150 0441 00
Adapter to mount 1c and 2c	5	4150 0861 00

LSR48

	See illustration	Ordering No.
Adapter for cone wheel with thread		
UNC/W 5/8"	4	4150 0945 01
Collet type 1b		
Nut	1a	4150 0849 00
Collet Ø 6 mm	1b	4150 1453 00
Collet Ø 8 mm	1b	4150 0706 00
Collet Ø 9 mm	1b	4150 0765 00
Collet Ø 10 mm	1b	4150 0681 00
Collet Ø 1/4"	1b	4150 1754 00
Collet holder	1c	4150 0680 01



Service Kits

28 series	4081 0315 90
38 series	4081 0311 90
43 series	4081 0020 90
48 series	4081 2023 90

Straight Grinders

For Straight Wheels

Atlas Copco straight grinders, equipped with a straight sided wheel, offer a high rate of material removal in open spaces.

The power ranges from 0.6 kW (0.83 hp) to 2.9 kW (4.0 hp).

- The LSR28 is suitable for lighter applications where accessibility is first priority. Low sound and low vibration levels thanks to the unique vibration damping system. Thermally insulated throttle handle and piped away exhaust air are some of the LSR28 product features, all designed for the best comfort for the operator.
- LSR43 has a proven and rigid design, and is suitable for those really tough applications where durability is needed.
- If you need maximum power, then LSR48 or LSR64 is the choice. 2.9 kW in combination with auto balancer for even less vibrations (LSR48). The length of these grinders can be used as a lever for higher feed force.

The LSR48 has minimal vibration levels thanks to the autobalancer and is equipped with an overspeed shut-off device.



Model	Max free speed r/min	For wheel dia. DxTxH mm	Spindle thread	Max output		Weight		Length mm	Air consumption at				Rec. hose size		Air inlet thread BSP	Ordering No.
				kW	hp	kg	lb		max output l/s	free speed cfm	l/s	cfm	mm	in		
LSR28 S180-05	18000	50x13x10	UNC 3/8x42	0.82	1.09	1.86	4.09	340	19.8	42.0	7.3	15.5	13	3/8	1/2	8423 1325 04
LSR28 S150-10	15000	100x13x20	UNC 1/2x42	0.70	0.94	2.16	4.75	340	18.0	38.2	5.8	12.3	13	3/8	1/2	8423 1325 02
LSR28 S110-08	11000	80x13x10	UNC 3/8x42	0.62	0.83	1.9	4.18	340	15.8	33.5	3.6	7.6	13	3/8	1/2	8423 1325 03
LSR43 S150-10	15000	100x25x25	UNC 1/2x49	1.0	1.4	2.8	6.2	438	23	49	10	21	13	1/2	1/2	8423 1430 34
LSR43 S120-08	12000	80x25x13	UNC 1/2x49	0.9	1.2	2.5	5.5	438	20	42	7	15	13	1/2	1/2	8423 1430 26
LSR43 S090-10	9000	100x25x13	UNC 1/2x49	0.8	1.1	2.4	5.3	438	18	38	5	11	13	1/2	1/2	8423 1430 18
LSR48 S150-10	15000	100x25x16-25	UNC 5/8x42	2.0	2.7	3.5	7.7	482	35	74	19	40	16	5/8	1/2	8423 1430 07
LSR48 S120-08 ^b	12000	80x25x13-25	UNC 1/2x37	1.8	2.4	3.0	6.6	495	30	64	13	28	16	5/8	1/2	8423 1430 04
LSR48 S120-08 ^a	12000	80x25x13-25	UNC 1/2x37	1.8	2.4	3.1	6.8	478	30	64	13	28	16	5/8	1/2	8423 1431 04
LSR48 S120-13	12000	125x25x16-25	UNC 5/8x42	1.8	2.4	3.6	7.9	482	30	64	13	28	16	5/8	1/2	8423 1430 06
LSR48 S120-10	12000	100x32x16-25	UNC 5/8x49	1.8	2.4	3.5	7.7	489	30	64	13	28	16	5/8	1/2	8423 1430 09
LSR48 S090-10 ^b	9000	100x25x13-25	UNC 1/2x37	1.5	2.0	3.2	7.0	495	28	59	11	23	16	5/8	1/2	8423 1430 02
LSR48 S090-10 ^a	9000	100x25x13-25	UNC 1/2x37	1.5	2.0	3.3	7.2	478	28	59	11	23	16	5/8	1/2	8423 1431 02
LSR64 S100-15	10000	150x25x25	UNC 5/8x55	2.9	4.0	5.8	2.8	535	53	112	26	55	16	5/8	1/2	8423 1640 55
LSR64 S072-13	7200	125x25x16	UNC 5/8x55	2.5	3.4	5.4	11.9	535	45	95	14	30	16	5/8	1/2	8423 1640 30
LSR64 S060-15	6000	150x25x16	UNC 5/8x55	2.3	3.1	5.4	11.9	535	41	87	11	23	16	5/8	1/2	8423 1640 22

DxTxH = Diameter x Thickness x Hole.

^a Requires reinforced grinding wheels according to standard.

^b LSR48 S120-08 and LSR48 S090-10 are equipped with closed wheel guard.

Model	Max free speed r/min	Spindle thread in x mm	Max output		Weight		Length mm	Air consumption at				Rec. hose size		Air inlet thread BSP	Ordering No.	
			kW	hp	kg	lb		max output l/s	free speed cfm	l/s	cfm	mm	in			
For wire brushes																
LSR28 ST070E-CW	7000	UNC 1/2 x 20	0.76	1.0	1.9	4.3	445	18.9	40.1	12.4	26.3	10	3/8	3/8	8423 1235 71	
LSR43 S072	7200	UNC 1/2 x 49	0.8	1.1	2.0	4.4	438	17	36	4	8	13	1/2	1/2	8423 1430 00	
LSR64 S041	4100	UNC 5/8 x 55	1.6	2.5	5.4	11.9	535	29	61	7	15	16	5/8	1/2	8423 1640 14	

Accessories Included

LSR28

Wheel guard, size according to type
Nut, flanges
Air hose, air hose nipple and clamp
Exhaust hose
Wrenches

LSR43

Wheel guard, size according to type
Nut
Flanges
Pin key

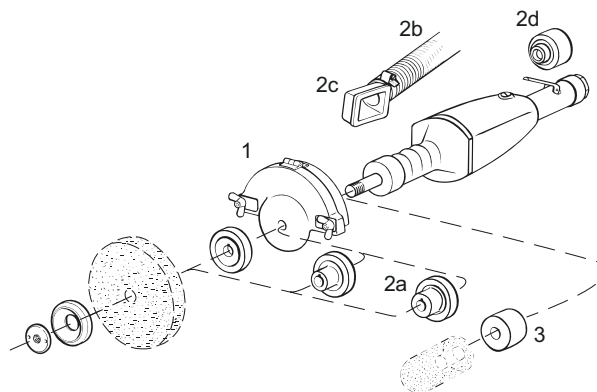
LSR48

Whip hose
Hook wrench
Pin key
Wheel guard, size according to type
Flanges that suit wheels with inner diameter of 13/16/20 and 25 mm are included LSR 48.

LSR64

Wheel guard, size according to type
Nut, flanges
Air hose nipple and clamp
Wrenches

Optional Accessories



	LSR28	LSR43	LSR48	LSR64	See illustration
Flange (for 125-150x25x32 wheel)	-	-	-	4150 0620 00	2a
Flange (for 80x19x10 wheel)	4150 1268 05 ^c	-	-	-	2a
Silencer	-	4150 1005 80 ^a	-	4150 1006 80 ^a	2b
Exhaust guard	-	4150 0938 80	-	4150 0968 80	2c
Lubricator	-	4150 1405 80	-	4150 1405 80	2d
Spacer	-	-	-	4150 0787 00 ^d	3
Spot suction	3780 4027 60 ^b	3780 4027 60 ^b	3780 4027 60 ^b	3780 4027 60 ^b	-

^a Can reduce sound level by 8-12 dB.

^b Suits wheelguard 80-150 mm.

^c Suits LSR 28S110-08.

^d Spacer to fit cone wheel.



Service Kits

28 series	4081 0317 90
43 series	4081 0020 90
48 series	4081 2023 90
53 series	4081 0132 90
64 series	4081 0138 90

Vertical Grinders For Depressed Center, Cut-off and Cup Wheels

The rigid design with a vertically standing air motor and nodular cast iron cylinder gives impressively long service life and durability. The nodular cast iron has a "lubricating" effect, which prolongs the intervals between services.

- LSS series is suitable for rough material removal and cutting off operations on open surfaces.
- The power is impressive and ranges from 1.4 kW (1.9 hp) to a massive 3.8 W (5.1 hp).
- LSS53 is equipped with a unique silencer that reduces the sound peaks created at start and shut-off.



Model	Max free speed r/min	For wheel dia mm	Spindle thread	Max output		Weight		Height over spindle mm	Air consumption at				Rec. hose size		Air inlet thread BSP	Ordering No.
				kW	hp	kg	lb		max output l/s	free speed cfm	l/s	cfm	mm	in		
LSS53 S120-13	12000	125	5/8	1.6	2.2	2.7	6.0	180	31	66	16	34	13	1/2	1/2	8423 2530 88
LSS53 S085-18	8500	180	5/8	1.4	1.9	2.9	6.4	180	27	57	10	21	13	1/2	1/2	8423 2530 72
LSS64 S085-18	8500	180	5/8	2.6	3.5	4.7	10.4	201	50	106	13	28	16	5/8	1/2	8423 2641 38
LSS53 S072-C13	7200	125	5/8	1.3	1.8	3.1	6.8	180	26	55	8	17	13	1/2	1/2	8423 2534 12
LSS64 S060-C15	6000	150	5/8	2.2	3.0	5.0	11.0	201	40	85	9	19	16	5/8	1/2	8423 2641 04
LSS64 S060-23	6000	230	5/8	2.2	3.0	5.1	12.6	201	40	85	9	19	16	5/8	1/2	8423 2641 46
LSS84 S060-23	6000	230	5/8	3.8	5.1	6.0	13.2	217	65	138	17	36	19	3/4	1/2	8423 2840 26

-12= 125 mm wheel.
 -18= 180 mm wheel.
 -23= 230 mm wheel.
 -C13= 125 mm cup wheel.
 -C15= 150 mm cup wheel.

Accessories Included

①

Attachment according to EN 68 (1. se ill.)

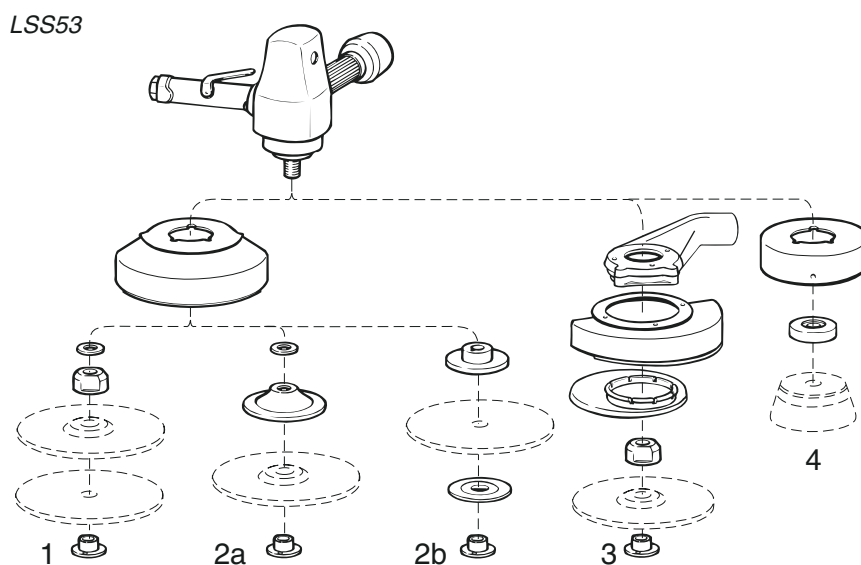
Wheel guard

Flange 4170 0758 01

Nut 4170 0220 01

Wrenches

Optional Accessories



	LSS53	LSS64	LSS84	See illustration
Accessory for depressed center wheel Includes: Rear and outer flange, nut and pin wrench	4170 0219 87	4150 0758 87	-	2a
Accessory for cut off wheel Includes: Rear and outer flange, nut and pin wrench	4170 1133 87	-	-	2b
Accessory for cup wheel 125 mm Includes: Wheel guard and flange	4170 0664 80	-	-	4
Accessory for cup wheel 150 mm Includes: Wheel guard and flange	-	4170 0652 80	-	4
Spot suction kit for depressed center wheel 180 mm	3780 4011 10	-	-	-
Spot suction kit for fibre disc 180 mm	3780 4011 00	-	-	3



Service Kits

LSS53 4081 0132 90

LSS64 4081 0133 90

LSS84 4081 0136 90

Surface sanding jobs with coarse grit fiber disc on stiff pads or with wire brush, require power. The Atlas Copco LSS series are reliable workhorses with lots of power that will be at your service for a long time. The rigid design with a vertically standing air motor and nodular cast iron cylinder gives impressively long service life and durability. The nodular cast iron has a “lubricating” effect, which prolongs the interval between services.

- LSS series is a good choice where accessibility is of less importance.
- LSS53 is equipped with a unique silencer that reduces the sound peaks created at start and shut-off.



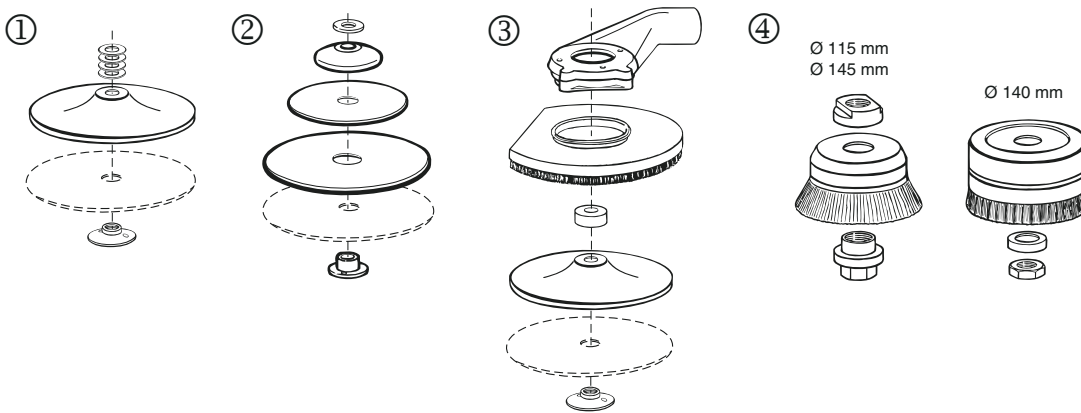
LSS53



LSS64

Model	Max free speed r/min	Rec. pad size dia mm	Spindle thread	Max output		Weight		Height mm	Air consumption at				Rec. hose size		Air inlet thread BSP	Ordering No.
				kW	hp	kg	lb		max output l/s	free speed l/s	max output cfm	free speed cfm	mm	in		
LSS53 S060	6000	180	5/8	1.2	1.6	2.3	5.1	180	24	51	7	15	13	1/2	1/2	8423 2530 23
LSS53 S060-M14	6000	180	M14	1.2	1.6	2.3	5.1	180	24	51	7	15	13	1/2	1/2	8423 2530 27
LSS64 S060	6000	180	5/8	2.2	3.0	4.1	9.0	201	40	85	9	19	16	5/8	1/2	8423 2640 12

Optional Accessories



Backing set for LSS53 and LSS64	Soft	Medium	Stiff	See illustration
Standard type Ø 125 mm - M14 and 5/8"	4170 0768 80	-	-	1
Standard type Ø 180 mm - M14 and 5/8"	4170 0756 80	-	4170 0757 80	1
Medium rough type - Ø 125-230 - 5/8"	-	4170 0259 80 ^a	-	2
Heavy duty type - Ø 180 mm - 5/8"	4170 0660 81 ^b	4170 0660 82 ^b	4170 0660 83 ^b	
Spot suction kit for fiber disc	LSS53	LSS64		See illustration
Ø 180 mm	3780 4011 00 ^c	-		3
Wire brushes	LSS53	LSS64		See illustration
Wire brush 115 mm	4170 0491 00	-	-	4
Wire brush 140 mm	-	4170 0685 00	-	4
Attachment set for wire brush	4170 0459 81	4170 0550 80	-	4

^a = Includes three pads 125, 180 and 230 mm, washer, hub, nut and wrench.

^b = Includes washers, rubber hub, back-up pad, nut, wrench.

^c = Includes flow chamber, cap, washers, backingpad, nut.



Service Kits

LSS53	4081 0132 90
LSS64	4081 0133 90