

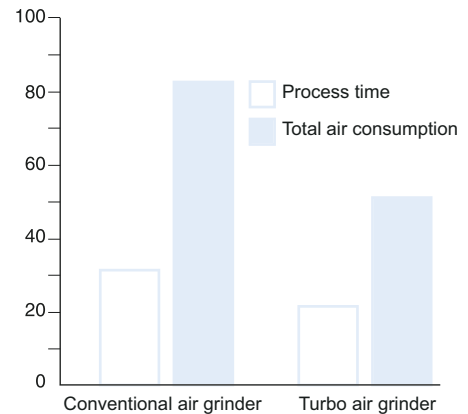
Twice the power. Half the weight. The Turbo grinder gives you twice the power of today's 5", 7" and 9" angle grinders. It is about half the size and weight of high frequency tools with comparable power.

- High material removal – The Turbo is powerful and keeps on working at high rotational speed. It gives a higher rate of cutting-off or material removal, with low wheel consumption.
- Power for efficiency – The Turbo is driven by a turbine motor, providing power-to-weight ratios never before achieved in grinders. This means you can choose a lighter, more compact tool for ease of use and good accessibility without sacrificing any of the power.
- Long service life – The turbine means there are no vanes to slide against the cylinder. The gear runs in oil in a housing with patented seals. The result is consistent performance and uninterrupted free operation.
- Minimized vibrations – on the Turbo, vibration has been cut to below 2.5 m/s². This has been achieved by an entirely new vibration-damping technique, Auto Balancing, in which a set of bearing balls is used to counterbalance the imbalance in the wheel.
- Lubrication-free – The unique turbine drive in the Turbo means that the motor doesn't need oil in the air for lubrication. This provides several benefits in terms of working environment, quality and productivity.
- Dust extraction – Efficient accessory and standard model for extraction of air-borne dust in sanding applications with fiber discs.

GTG21 is the latest of the Turbo grinders. It is the best choice for rough grinding and sanding applications.



MORE EFFECTIVE



The turbine motor is more efficient than a conventional grinder motor. Therefore it takes less time to do the same job. Also the total air consumption will be a lot less for a specific job.

Model	Max free speed r/min	For wheel dia mm	Max output		Weight		Height over spindle		Air consumption at max output				Rec. hose size		Air inlet thread BSP	Ordering No.
			kW	hp	kg	lb	mm	in	l/s	cfm	l/s	cfm	mm	in		
For grinding and cutting																
GTG21 F120-13	12000	125	2.1	2.8	1.8	3.9	68	2.7	30	64	10	21	13	1/2	3/8	8423 2963 00
GTG21 F085-18	8500	180	2.1	2.8	2.0	4.2	72	2.8	30	64	10	21	13	1/2	3/8	8423 2963 02
For sanding																
GTG21 S085 ^a	8500	180	2.1	2.8	1.6	3.5	80	3.1	30	64	10	21	13	1/2	3/8	8423 2963 05
GTG21 S085 M14	8500	180	2.1	2.8	1.6	3.5	80	3.1	30	64	10	21	13	1/2	3/8	8423 2963 07
GTG21 D120	12000	125	2.1	2.8	1.6	3.5	92	3.6	30	64	10	21	13	1/2	3/8	8423 0800 00
GTG21 D085	8500	180	2.1	2.8	1.6	3.5	92	3.6	30	64	10	21	13	1/2	3/8	8423 0800 01

^a UNC 5/8"-11 spindle.

Flow requirement 250 m³/h.

-D prepared for accessories for spot suction kit.

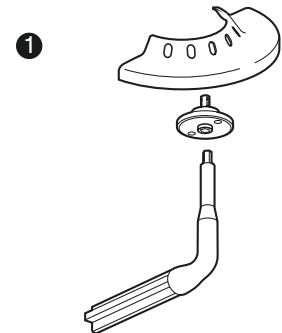
Accessories Included

All models

Adjustable support handle
 Whip hose 0.7 m long, 13 mm dia complete with nipple and ErgoNIP 10
 Gearbox oil, one tube

① GTG21 F120/F085

Adjustable wheel guard
 Attachment flanges for 1-10 mm thick grinding wheels
 Hex key for wheel change

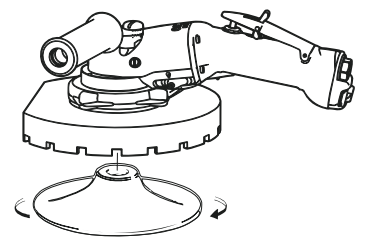


Optional Accessories

Air hose set for maximum performance	Ordering No.
RUBAIR 13, L=5 m, included ErgoNIP 10, ErgoQIC 10	8202 1180 22
Air preparation unit, incl MIDI F/R, ball valve ErgoQIC 10	8202 0845 48
TURBO 16, L=10 m, included ErgoNIP 10, ErgoQIC 10	8202 1180 46

Spot suction kit for GTG21 D120 and GTG21 D085

Model	Ordering No.	
	Dia 125 mm	Dia 180 mm
Grinding depressed center wheel		
GTG21 D120	3780 4090 23	
GTG21 D085		3780 4090 21
Sanding fiber disc		
GTG21 D120	3780 4090 24	
GTG21 D085	3780 4090 24	3780 4090 26
Cutting GRP with diamond disc		
GTG21 D120	3780 4090 25	
GTG21 D085		3780 4090 22
Diamond disc	3780 5074 61	3780 5074 62

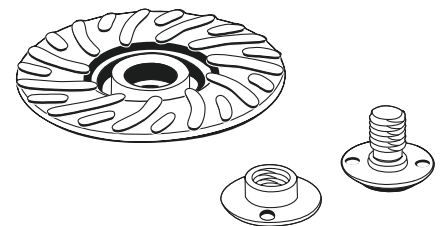


Spot suction kit (ex. sanding fiber disc)

Spindle adapter kit for sanding

Sanding kit for	Support pad dia mm	Ordering No.	
		5/8"	M14
GTG21 F120-13	120	4175 0883 92	4175 0883 93
GTG21 F085-18	162	4175 0883 90	4175 0883 91
Adapter ^a		4175 0883 04	4175 0883 03
Nut ^a		4175 0893 00	4175 0893 02

^a Included in the kit.



Spindle adapter kit



Service Kits

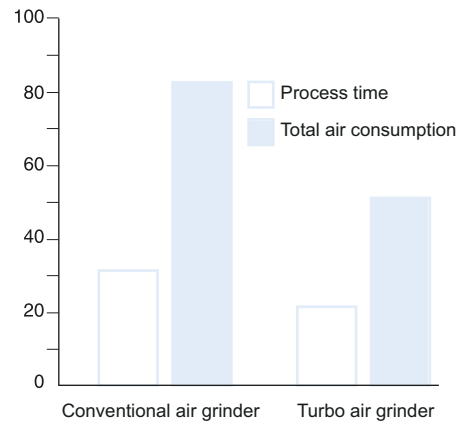
4081 0220 90

The GTG/GTR40 are the most powerful grinders in the Turbo grinder range, with incredible power for their size and weight. The range includes angle and straight type grinders for virtually every common rough grinding application.

- GTG40 F – for rough grinding and cutting off with depressed center wheels.
- GTG40 S – for surface finishing with coated abrasives and wire brushes.
- GTG40 C – for rough grinding with cup wheels.
- GTR40 – for rough grinding and applications such as internal and external cleaning of castings with straight grinding wheels.
- Dust extraction – Efficient accessory and standard model for extraction of air-borne dust in sanding applications with fiber discs.



MORE EFFECTIVE



The turbine motor is more efficient than a conventional grinder motor. Therefore it takes less time to do the same job. Also the total air consumption will be a lot less for a specific job.

Model	Max free speed r/min	For wheel dia mm	Max output		Weight		Height over spindle		Air consumption at				Rec. hose size		Air inlet thread BSP	Ordering No.
			kW	hp	kg	lb	mm	in	max output l/s	free speed cfm	l/s	cfm	mm	in		
For grinding and cutting																
GTG40 F085-18	8500	180	4.5	6.1	3.8	8.4	128	5.0	60	126	20	42	16	5/8	1/2	8423 2900 10
GTG40 F066-23	6600	230	4.5	6.1	4.0	8.8	128	5.0	60	126	20	42	16	5/8	1/2	8423 2910 10
For wire brush and sanding																
GTG40 S060	6000	140 ^a	4.5	6.1	3.6	7.9	132	5.2	60	126	20	42	16	5/8	1/2	8423 2930 00
For cup wheel type 11																
GTG40 S060-C15 ^b	6000	150	4.5	6.1	4.3	10.5	126	5.0	60	126	20	42	16	5/8	1/2	8423 2930 10

^a For wire brush, Ø 230 mm for fibre disc.

^b Spindle thread: UNC 5/8". Length 23.5 mm.

Model	Max free speed r/min	For wheel dia DxTxH ^a mm	Spindle thread	Max output		Weight		Length mm	Air consumption at				Rec. hose size		Air inlet thread BSP	Ordering No.
				kW	hp	kg	lb		max output l/s	free speed cfm	l/s	cfm	mm	in		
GTG40 S085-15	8500	150x25x25	UNC 5/8x11	4.5	6.1	5.6	12.3	563	60	126	20	42	16	5/8	1/2	8423 2950 00
GTR40 S072-13	7200	125x25x25	UNC 5/8x11	4.5	6.1	5.6	12.3	563	60	126	20	42	16	5/8	1/2	8423 2951 00
GTR40 S060-15	6000	150x25x25	UNC 5/8x11	4.5	6.1	5.8	12.8	563	60	126	20	42	16	5/8	1/2	8423 2952 00
GTR40 S060-20	6000	200x25x25	UNC 5/8x11	4.5	6.1	5.8	12.8	563	60	126	20	42	16	5/8	1/2	8423 2954 00

^a For straight wheels.

Accessories Included

GTG40

- Adjustable wheel guard
- Support handle
- Attachments flanges for 1.5-7 mm thick cut-off wheels and 2.5-8 mm thick depressed center wheels
- Whip hose 0.7 m long, 16 mm dia complete with nipple and ErgoNIP 10
- Gearbox oil, one tube
- Hex key for wheel change

GTR40

- Wheel guard
- Attachments flanges for grinding wheels 20-25 mm thick and with hole Ø 25 mm
- Whip hose 0.7 m long, 16 mm dia complete with nipple and ErgoNIP 10
- Gearbox oil, one tube
- Key and spanner for wheel change

Optional Accessories

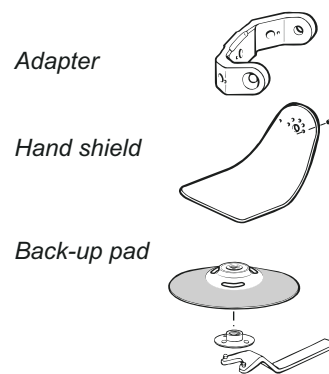
GTG40

	Ordering No.
Wire brush Ø 140 mm	4170 0685 00
Wire brush attachment set	4170 0550 82
Heavy duty backing pad for sanding Ø 180 mm (7")	4170 1192 90
Ø 230 mm (9")	4170 1193 90
Hand shield	4175 0165 90
Adapter for positioning support handle 120/135° between handles	4175 0164 90*
Dust extraction kit ^a for 180 mm fiber disc GTG40 S060	3780 4090 10
Hose kit including 1.8 m vacuum hose, Ø 38 mm and air hose Ø 13 mm	3780 2724 41
Friction plate complete	4175 0186 90
Attachment for cup wheel with plane hole	4175 0178 90
Modification kit for handle inclined 10°	4170 1157 93

^a Incl flow chamber, suction cap and support pad.

* Included as standard in GTG40 S060-C15.

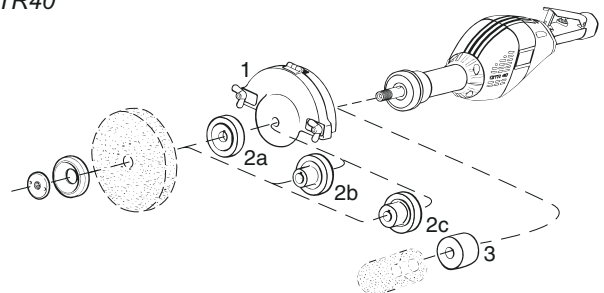
GTG40



GTR40

	Thickness x Hole dia mm	Ordering No.
2 Rear flange	TxH20-25x 16	2a 4150 0619 00
	x 20	2b 4150 1650 00
	x 32	2c 4150 0620 00
3 Spacer for cone wheel		3 4150 0787 00

GTR40



Air hose sets for GTG40 and GTR40

Air hose set	Length	Air pressure	Ordering No.
Fixed installation 5 m, Ø 16 mm TURBO 16/5 M/CLAW	5 m	<6 bar	8202 1181 95
Flexible installation 5 m, Ø 16 mm^b TURBO 16/5 M/EQ 10	5 m	>6 bar	8202 1181 80
Flexible installation 20 m, Ø 19 mm^b TURBO 20/20 M/EQ 10	20 m	>6 bar	8202 1181 75
Air preparation unit, including MAXI F/R 25 with ball valve and claw coupling			8202 0845 74

^b Whip hose 0.5 m included as standard in GTG/GTR40.



Service Kits

GTG40	4081 0153 90
GTR40	4081 0153 91

Angle Grinders

For Depressed Center and Cut-off Wheels

No matter which of our vane grinders you choose you will get high power, low weight, vibrations and noise levels, and durability.

- LSV18 series** – For work in cramped spaces, the LSV 18 series is small yet powerful, and lubrication free.
 Features: Speed governor, sealed anglehead, thermally insulated handle and lubrication-free air motor.
- LSV28 series** – Small, yet powerful giving 0.75 kW (1 hp), available in an extended version, for optimal accessibility.
 Features: Speed governor, sealed angle head, thermally insulated handle and lubrication-free air motor (LSV 28 S060-18 model).
- LSV38** – If you are looking for the most powerful one-hand die grinder on the market, then you have found it – up to 1.3 kW (1.7 hp).
 Features: Speed governor, sealed angle head and lubrication-free air motor, thermally insulated handle. Autobalancer (SA models) reduces the vibrations by up to 50 %, lockable spindle and adjustable wheel guard.
- LSV48** – Our most powerful angle vane grinder, 1.9 kW (2.5 hp) for ultimate productivity.
 Features: Speed governor, sealed angle head and lubrication-free air motor, thermally insulated handle. Autobalancer (SA models) reduces the vibrations by up to 50%, lockable spindle.



Model	Max free speed r/min	For wheel dia DxTxH ^a mm	Spindle thread	Max output		Weight		Height over spindle mm	Air consumption at				Rec. hose size		Air inlet thread BSP	Ordering No.
				kW	hp	kg	lb		max output l/s	free speed cfm	l/s	cfm	mm	in		
LSV18 S170-08	17000	80x7x10	UNF 3/8"	0.45	0.6	0.7	1.55	71	11.2	23	6.6	14	10	3/8	1/4	8423 0111 10
LSV28 ST13-10E	13000	100x7x9.5	3/8	0.75	1.0	1.5	3.3	68	21.5	45	14.5	30	10	3/8	3/8	8423 0125 29
LSV28 ST12-10	12000	100x7x16	3/8	0.75	1.0	1.7	3.7	80	17.4	36.9	7.5	15.9	10	3/8	3/8	8423 0125 14
LSV28 ST12-12	12000	115x7x22	3/8	0.75	1.0	1.7	0.0	80	17.4	36.9	7.5	15.9	10	3/8	3/8	8423 0125 16
LSV28 ST12-13	12000	125x7x22	3/8	0.75	1.0	1.7	0.0	80	17.4	36.9	7.5	15.9	10	3/8	3/8	8423 0125 17
LSV28 S060-18	6000	180 ^b	5/8"-11	0.73	0.98	2.5	5.4	87	16	33.9	7.3	15.5	10	3/8	3/8	8423 0135 53
LSV38 S12-125	12000	125x7x22	M14	1.30	1.7	1.6	3.5	83	28	58	15	31	13	3/8	1/2	8423 0131 08
LSV38 ST12-125	12000	125x7x22	M14	1.30	1.7	1.8	4.0	83	28	58	15	31	13	3/8	1/2	8423 0131 09
LSV38 SA12-125	12000	125x7x22	M14	1.30	1.7	2.0	4.4	83	28	58	15	31	13	3/8	1/2	8423 0131 13
LSV48 SA120-13	12000	125x7x22	M14	1.9	2.5	2.5	5.5	78	36	76	17	36	16	5/8	1/2	8423 0132 07
LSV48 SA085-18	8500	180x7x22	M14	1.9	2.5	2.7	5.9	78	36	76	17	36	16	5/8	1/2	8423 0132 06
LSV48 SA066-23	6600	230x7x22	5/8"-11	1.9	2.5	2.9	6.4	82	36	76	17	36	16	5/8	1/2	8423 0132 08

^a DxTxH = Diameter x Thickness x Hole.

^b Specially for flexible depressed center wheel.

SA = Autobalancer.

E = Extended version.

With wheel guard for disc

-08 = Ø 75 mm

-12 = Ø 115 mm

-13 = Ø 125 mm

-18 = Ø 180 mm

-23 = Ø 230 mm

Accessories Included

LSV18

Wheel guard 80 mm
 Flanges 4150 1158 80
 Air Hose nipple, clamp
 Wrenches
 Exhaust hose set

LSV28

Wheel guard
 Flanges 4150 1160 80
 Support handle 4150 1521 80
 Air hose, air hose nipple, clamp
 Wrenches
 Exhaust hose set

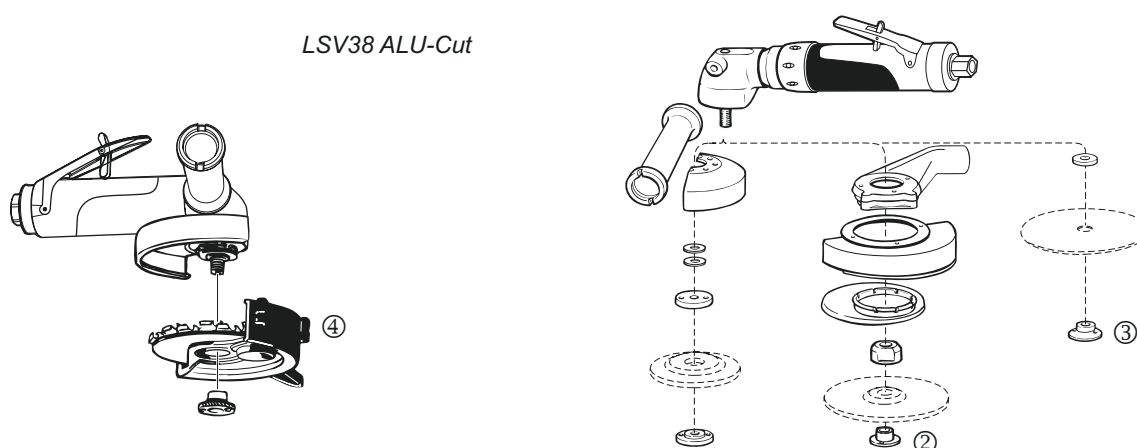
LSV38

Wheel guard (LSV38 S)
 Adjustable wheel guard (LSV38 ST, -SA)
 Wheel attachment flanges
 Wrenches for flanges
 Spindle lock
 Soft grip support handle
 Exhaust hose (LSV38 ST)
 Reinforced exhaust hose (LSV38 SA)
 Autobalancer (LSV38 SA)
 Whip hose Turbo 13 with ErgoNIP 10 (LSV38 ST, -SA)

LSV48

Wheel guard
 Flange nut 4150 1160 02
 Support handle 4175 0868 82

Optional Accessories



	LSV18	LSV28	LSV38	LSV48	See illustration
Spot suction kit for depressed center wheel					
Ø 125 mm	-	3780 4008 70	3780 4008 73	-	2
Ø 180 mm	-	-	-	3780 4093 41	2
Spot suction for diamond cutting blade					
Ø 100 mm (Cutting depth 25 mm)	-	3780 4009 20	-	-	-
Ø 125 mm (Cutting depth 30 mm)	-	-	3780 4008 74	-	-
Ø 180 mm (Cutting depth 50 mm)	-	-	-	3780 4093 42	-
Diamond cutting blade					
Ø 100 mm	-	3780 5074 00	-	-	-
Ø 125 mm	-	-	3780 5074 61	-	-
Ø 180 mm	-	-	-	3780 5074 62	-
Alu-Cut					
Alu-Cut guard kit	-	-	4112 1161 90	-	4
Carbide tipped cutter Ø 125 mm, t=2 mm	-	-	4112 1164 00 ^a	-	-
Carbide tipped cutter Ø 125 mm, t=4 mm	-	-	4112 1162 00 ^b	-	-
Adapter for fitting flexible depressed for LSV28 S060-18	-	4170 0759 00	-	-	3

^a For cutting applications in aluminum.

^b For milling applications in aluminum.



Service Kits

LSV18 4081 0355 90
 LSV28 4081 0317 90
 LSV38 4081 0309 90
 LSV48 4081 0312 90